

# CTB370NX Operating Guide

Extraction Battery Vacuum



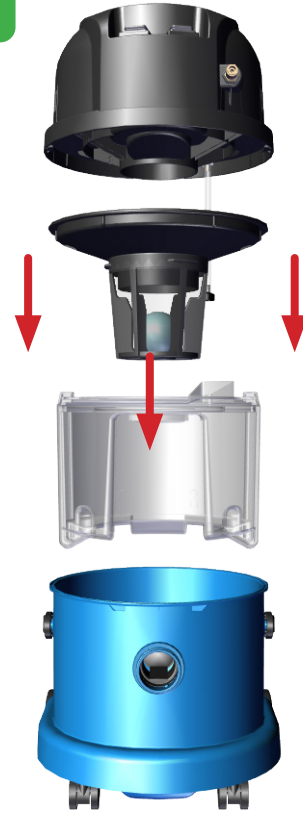
**START**



## 1 Clean water tank filling



## 2 Wet Set-Up



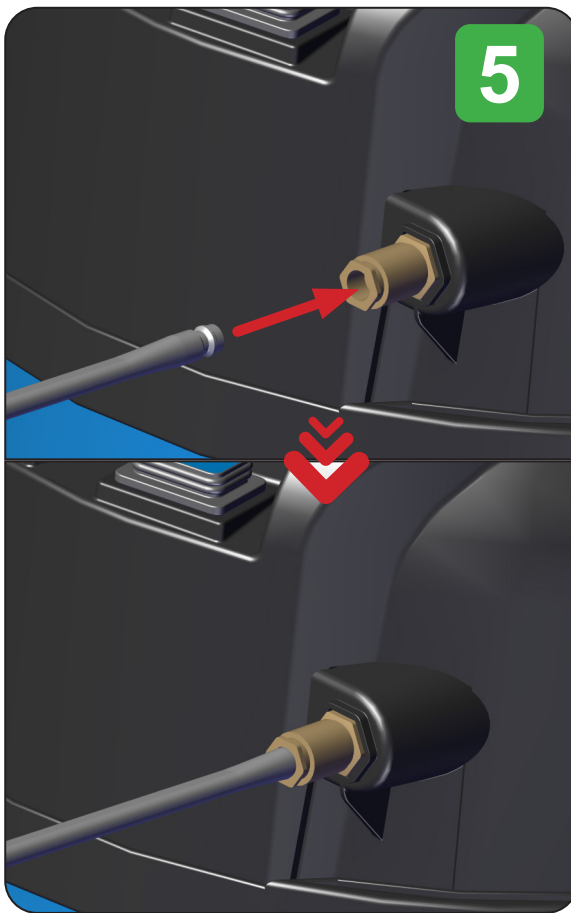
## 3



## 4



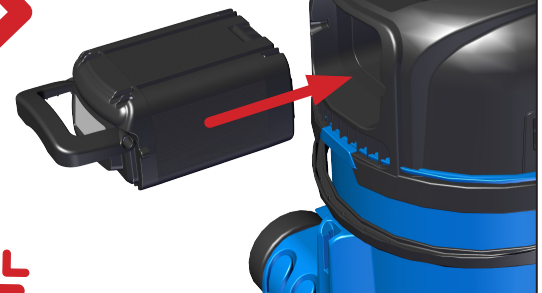
## 5



## 6.A



## 6.B



## 6.C



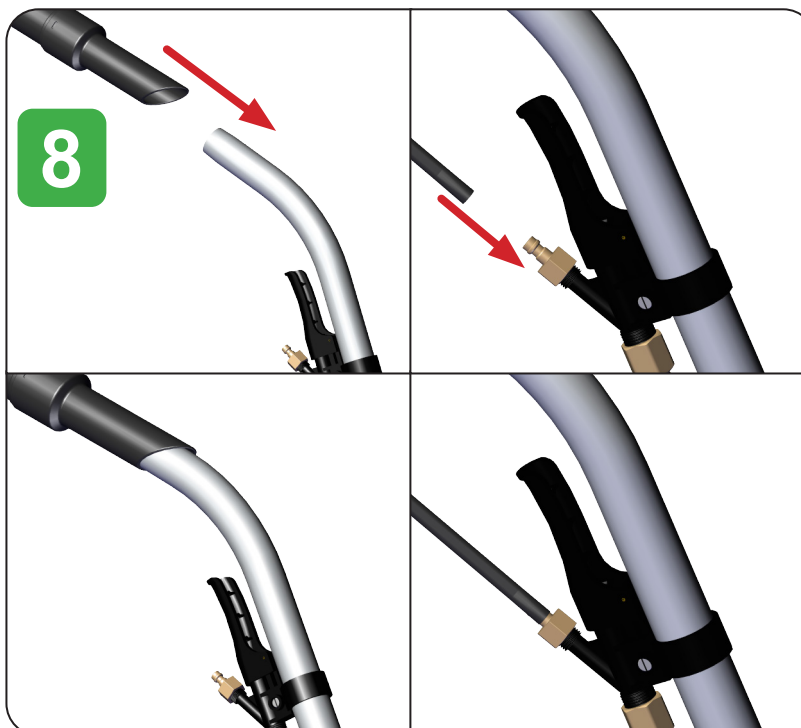
## 6.D



## 7



## 8



Place the NX300 battery on charge after each use.

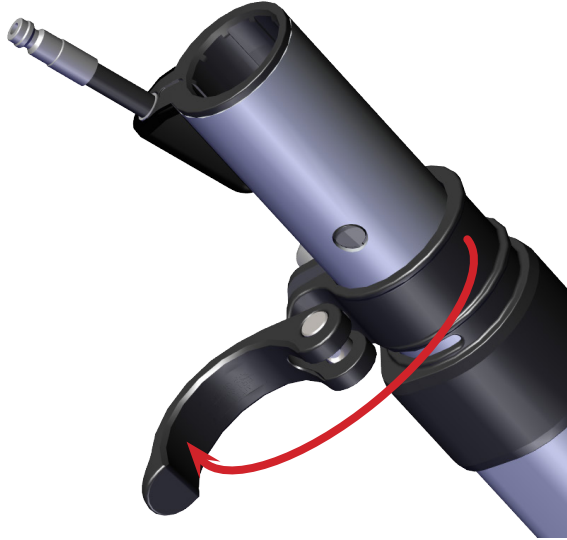
# X-Tract Operating Guide

CTX-130



**START**

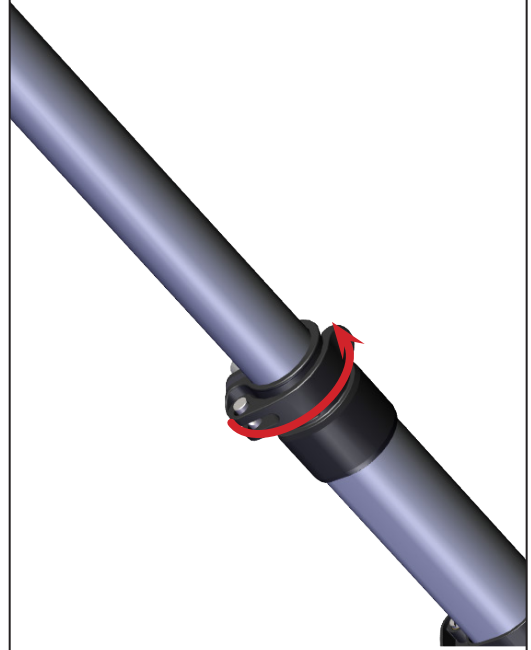
**1**



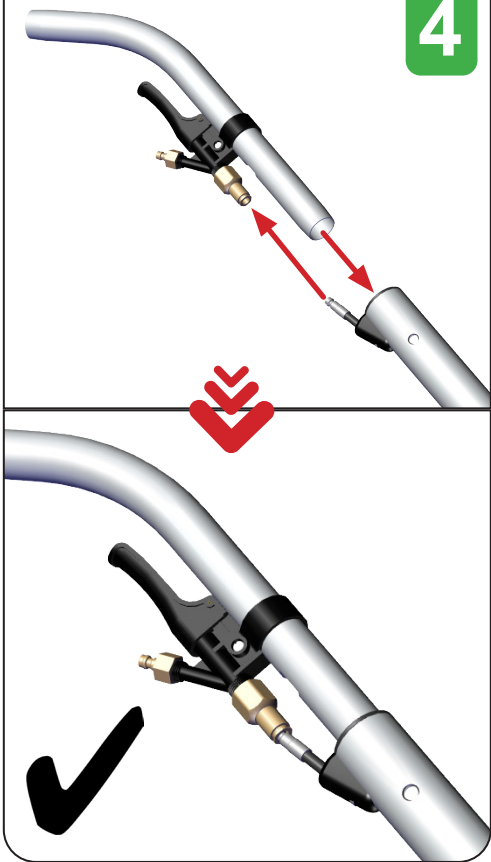
**2**



**3**



**4**



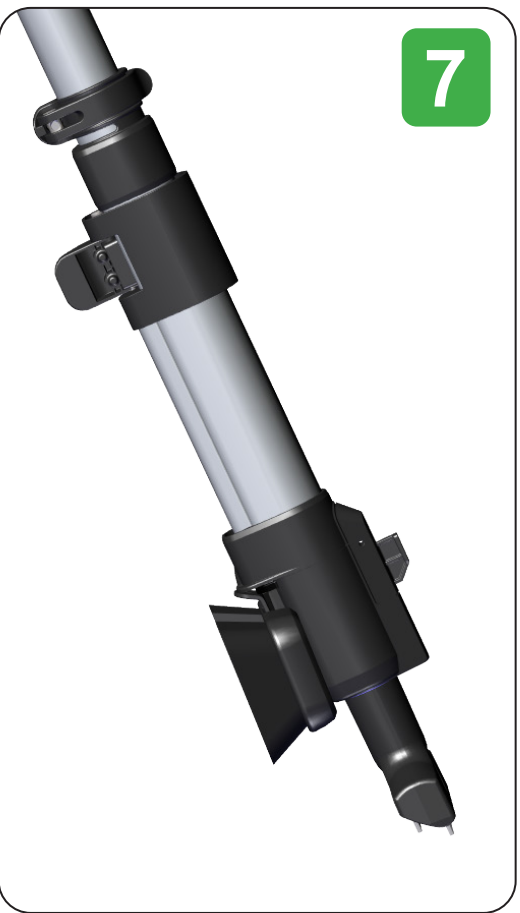
**5**



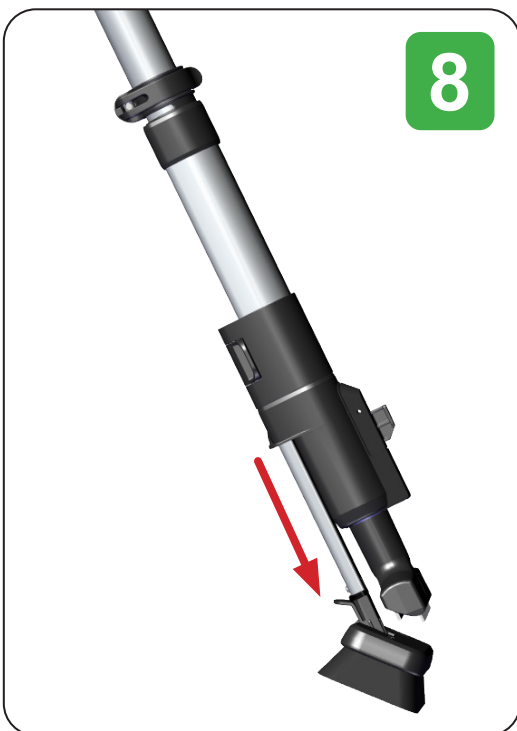
**6**



**7**



**8**



**9**

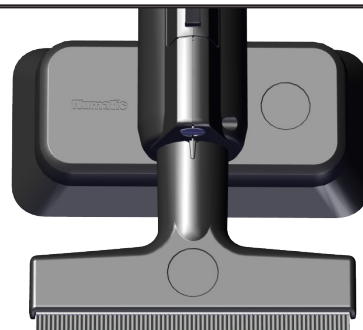


**10**



Scrub brush mode

**11**



Wet pick-up mode

