



CPP-H

Translator with indication lamp

CPP-MP

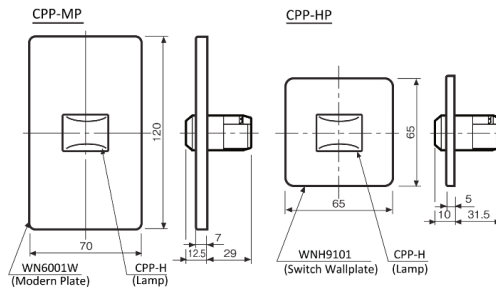
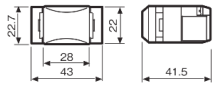


CPP-HP

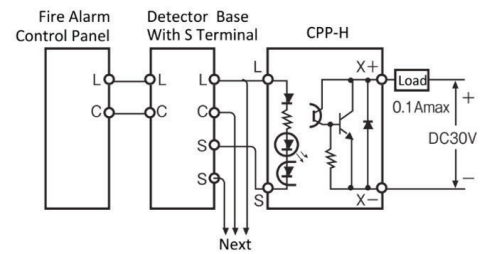


Dimension (mm)

Translator With Indication Lamp (CPP-H)



Diagram



Specification	
Type	Translator (With Indication Lamp)
Model	CPP-H, CPP-MP, CPP-HP
Operating Voltage	11mA @10Vdc
Voltage transfer output	X+, X- Terminal 100mA @30Vdc (Transistor Open Corrector)
Operating Temp. Range	-10°C to 40°C
External Wire Resistance	50 Ω or less
Material Body Lamp Plate	Self-Extinguishing Resin Self-Extinguishing Resin ABS Resin
Color Body Lamp Plate	White Ivory Red Milky White
Weight CPP-H CPP-MP CPP-HP	Approx. 30g Approx. 80g Approx. 60g
Country of Origin	Japan
Approval	JFEII
Compatible Detector Base	YBR-□L/2 YBF-RL/2J YBF-RL/4H5 YBO-R/4C

* CPP-MP, CPP-HP are set items. (Main body + Plate + Metal fitting)

CPP-MP:	Lamp Plate Metal Fitting	CPP-H WN6001W (ABS Resin) WN3700020
CPP-HP:	Lamp Plate Metal Fitting	CPP-H WNH9101 (ABS Resin) WNH3901

* Compatible plate to use with CPP-H is available at electrical market.

HOCHIKI ASIA PACIFIC PTE. LTD.

82 UBI Ave 4 #06-02
Edward Boustead Centre, Singapore 408832
TEL: 65-6841-9728 | FAX: 65-6841-9781
URL : www.hochikiasiapacific.com

HEAD OFFICE

10-43 Kamiosaki 2-Chome.
Shinagawa-Ku, Tokyo 141-8660 Japan
TEL: 81-(3)-3444-4116 | FAX: 81-(3)-3444-4167
URL :www.hochiki.co.jp