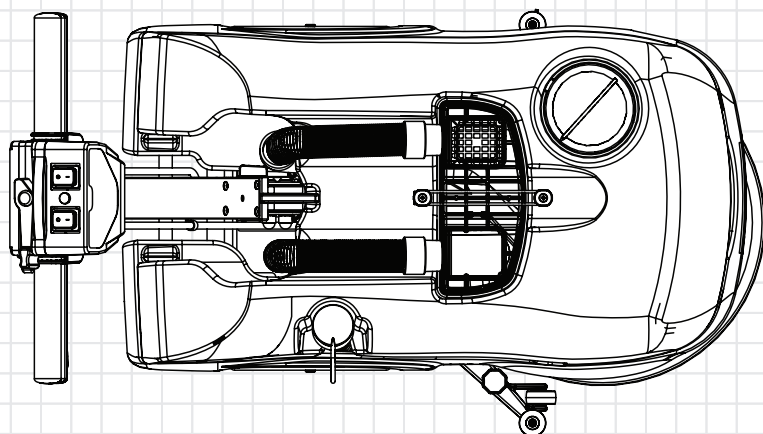
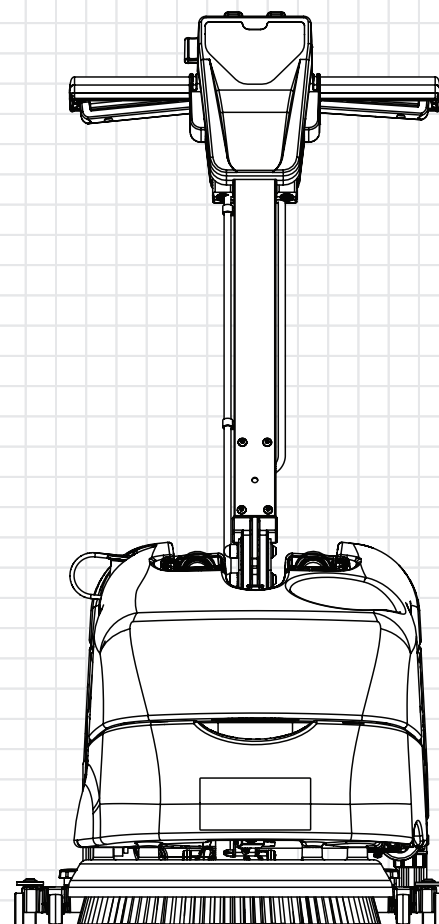
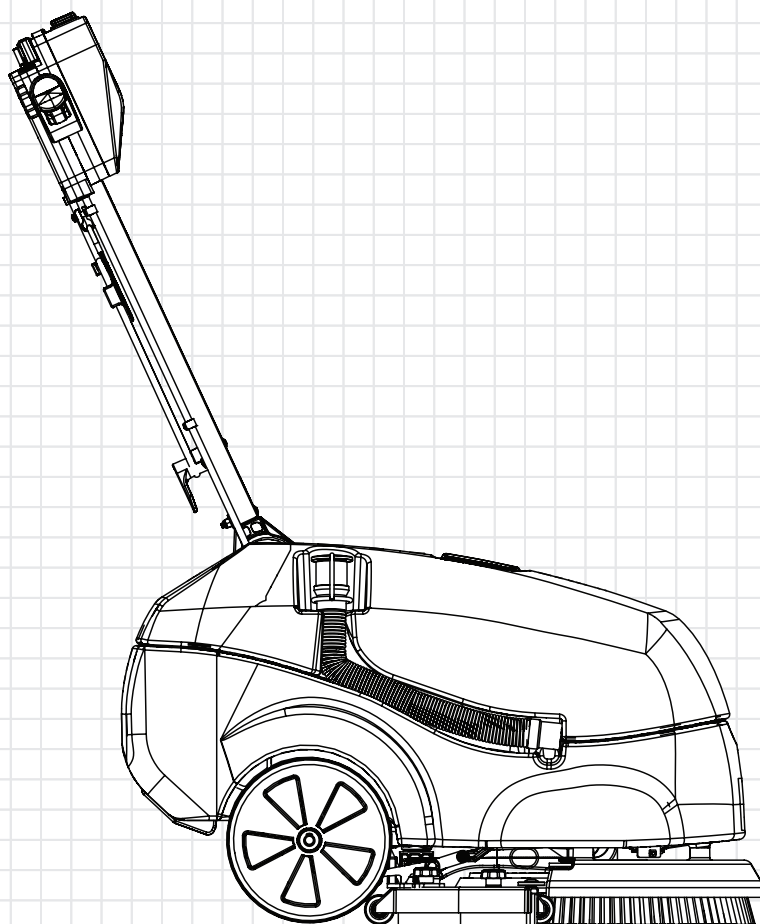


TT1840G / HT1840



Service Engineer Exploded Drawings



DISCLAIMER:

These drawings are for part order reference only and intended for service engineers use.

The installation of Genuine Numatic spare parts should only be executed by Certified Numatic service engineers who specialised and familiar with all relevant safety regulations.

Numatic International Ltd do not accept responsibility or liability for any loss or damage to property or person if repairs or servicing of products are carried out by non-certified persons.

Specifications and parts are subject to change without notice.

HAFTUNGSAUSSCHLUSS:**DE**

Diese Zeichnungen dienen nur als Referenz für Teilebestellungen und sind nur für den Gebrauch durch Servicetechniker bestimmt.

Die Montage von originalen Numatic-Ersatzteilen darf nur von zertifizierten Numatic-Servicetechnikern ausgeführt werden, die mit allen relevanten Sicherheitsvorschriften vertraut sind.

Numatic International Ltd übernimmt keine Verantwortung oder Haftung für Verluste oder Schäden an Eigentum oder Personen, wenn Reparaturen oder Wartungsarbeiten an Produkten von nicht zertifizierten Personen durchgeführt werden.

Technische Daten und Teile können ohne vorherige Ankündigung geändert werden.

CLAUDE DE NON-RESPONSABILITÉ:**FR**

Ces schémas sont fournis à titre de référence de commande de pièces uniquement et sont destinés aux techniciens de maintenance.

L'installation de pièces de rechange Numatic d'origine doit être effectuée uniquement par des techniciens de maintenance Numatic certifiés spécialisés et familiarisés avec toutes les règles de sécurité applicables.

Numatic International Ltd décline toute responsabilité en cas de perte ou de dommage matériel ou personnel si des réparations ou l'entretien des produits sont effectués par des personnes non certifiées.

Les spécifications et les pièces sont susceptibles d'être modifiées sans préavis.

DISCLAIMER:**NL**

Deze tekeningen zijn uitsluitend bedoeld als referentie voor het bestellen van onderdelen en voor gebruik door servicemonteurs.

De installatie van originele reserveonderdelen van Numatic mag alleen worden uitgevoerd door gecertificeerde servicemonteurs van Numatic die gespecialiseerd zijn en bekend zijn met alle relevante veiligheidsvoorschriften.

Numatic International Ltd aanvaardt geen verantwoordelijkheid of aansprakelijkheid voor verlies of schade aan eigendommen of personen als reparaties of onderhoud aan producten worden uitgevoerd door niet-gecertificeerde personen.

Specificaties en onderdelen kunnen zonder voorafgaande kennisgeving worden gewijzigd.

RENÚNCIA DE RESPONSABILIDADE:**PT**

Estes desenhos servem apenas como referência para a encomenda de peças e destinam-se a ser utilizados pelos técnicos de assistência.

A instalação de peças sobresselentes genuínas da Numatic só deve ser efetuada por técnicos de assistência certificados da Numatic que se especializem e familiarizem com todos os regulamentos de segurança relevantes.

A Numatic International Ltd não aceita qualquer responsabilidade por perdas ou danos materiais ou pessoais se as reparações ou a manutenção dos produtos forem efetuadas por pessoas não certificadas.

As especificações e as peças estão sujeitas a alterações sem aviso prévio.

ESCLUSIONE DI RESPONSABILITÀ:**IT**

Questi disegni sono forniti solo come riferimento per l'ordine dei componenti e sono destinati all'uso da parte dei tecnici dell'assistenza.

L'installazione di ricambi originali Numatic deve essere eseguita esclusivamente da tecnici dell'assistenza certificati Numatic specializzati e a conoscenza di tutte le norme di sicurezza pertinenti.

Numatic International Ltd non si assume alcuna responsabilità per eventuali perdite o danni alla proprietà o alle persone se le riparazioni o la manutenzione dei prodotti vengono eseguite da persone non certificate.

Le specifiche e le parti sono soggette a modifiche senza preavviso.

EXENCIÓN DE RESPONSABILIDAD:

ES

Estos esquemas solo se muestran como referencia para pedir piezas y para su uso por parte de ingenieros de mantenimiento.

La instalación de recambios originales de Numatic solo deben realizarla los ingenieros de mantenimiento homologados de Numatic que estén especializados y familiarizados con las normativas de seguridad pertinentes.

Numatic International Ltd no acepta la responsabilidad de cualquier pérdida o daño a la propiedad o a las personas si las reparaciones o el mantenimiento de los productos se llevan a cabo por personas sin certificación.

Las especificaciones y piezas están sujetas a cambios sin previo aviso.

ZASTRZEŻENIE:

PL

Rysunki te służą wyłącznie do celów referencyjnych podczas zamawiania części i są przeznaczone do użytku przez inżynierów serwisowych.

Montaż oryginalnych części zamiennych Numatic powinien być wykonywany wyłącznie przez certyfikowanych serwisantów firmy Numatic, którzy posiadają odpowiednie kwalifikacje i znają wszystkie odpowiednie przepisy bezpieczeństwa.

Firma Numatic International Ltd nie ponosi odpowiedzialności za jakiegokolwiek straty lub szkody majątkowe i osobiste, jeśli naprawy lub serwisowanie produktów są przeprowadzane przez osoby nieposiadające certyfikatu.

Dane techniczne i części mogą zostać zmienione bez powiadomienia.

FRISKRIVNINGSKLAUSUL:

SV

Dessa ritningar är endast avsedda för referens vid beställning av reservdelar och är avsedda för servicetekniker.

Installation av originalreservdelar från Numatic får endast utföras av certifierade Numatic-servicetekniker som specialiserar sig på och känner till alla relevanta säkerhetsföreskrifter.

Numatic International Ltd påtar sig inget ansvar för förlust eller skada på egendom eller person om reparationer eller service av produkter utförs av icke-certifierade personer.

Specifikationerna och produktens delar kan ändras utan föregående meddelande.

VASTUUVAPAUCLAUSEKE:

FI

Nämä piirrokset on tarkoitettu ainoastaan osien tilaamisen avuksi ja ainoastaan huoltoinsinöörien käyttöön. Aitoja Numatic-varaosia saavat asentaa vain sertifioidut Numatic-huoltoinsinöörit, jotka ovat perehtyneet kaikkiin asiaankuuluviin turvamääräyksiin.

Numatic International Ltd ei ole vastuussa mistään omaisuus- tai henkilövahingoista, jos sertifioidut henkilöt ovat korjanneet tai huoltaneet tuotteita.

Teknisiä ominaisuuksia ja osia voidaan muuttaa ilman erillistä ilmoitusta.

ANSVARFRASKRIVELSE:

DA

Disse tegninger er kun til reference for reservedelsordrer og er beregnet til serviceteknikere.

Montering af originale Numatic-reservedele må kun udføres af certificerede Numatic-serviceteknikere, der er specialiseret i og har kendskab til alle relevante sikkerhedsbestemmelser.

Numatic International Ltd påtager sig intet ansvar for tab eller skade på ejendom eller person, hvis reparationer eller service på produkter foretages af ikke-certificerede personer.

Specifikationer og dele kan ændres uden varsel.

Numatic International Spare Parts

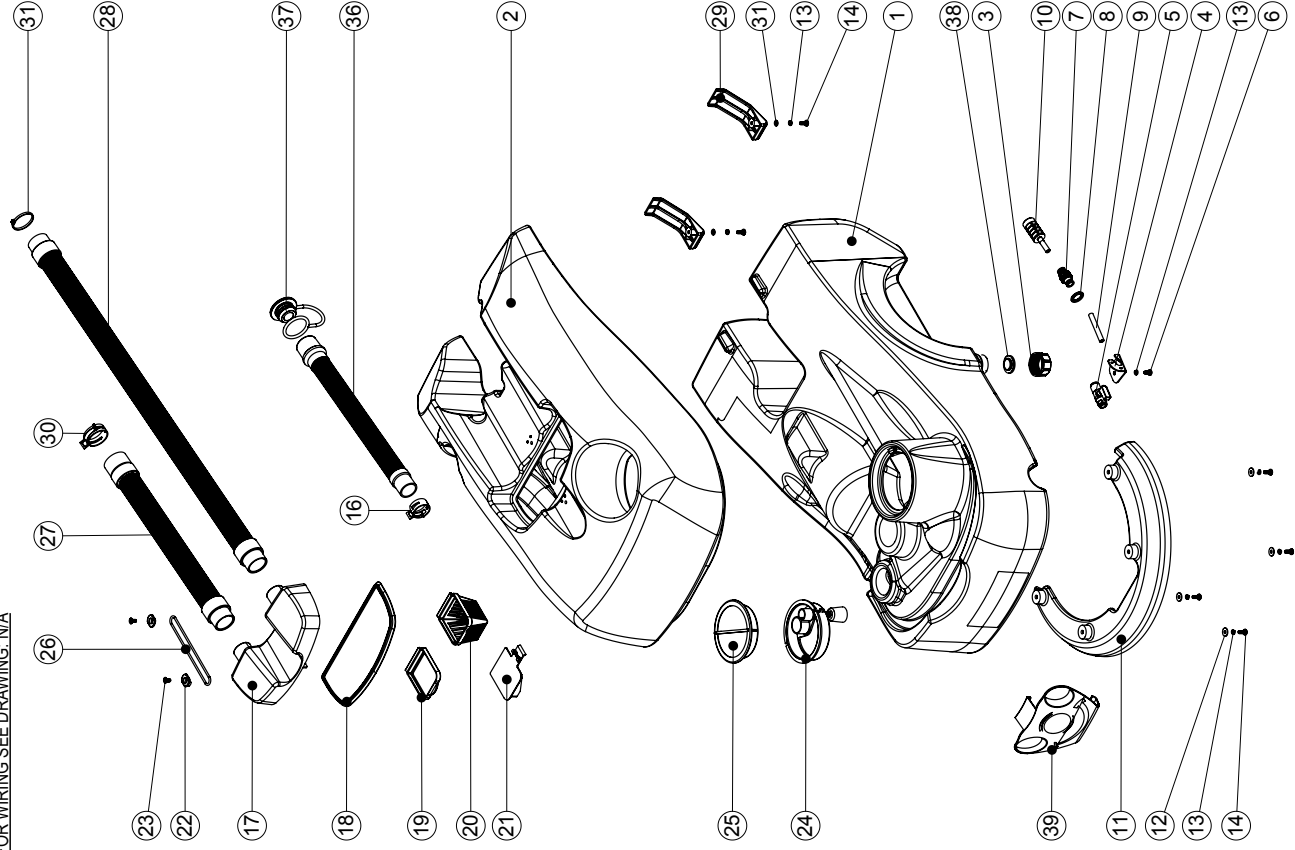
Model No: TT (& HT) 1840 TANKS ASSEMBLY EXPLODED DRAWING

234839

Internal Code: DRAWING: DRW-13251 ISS:A20
14/01/2019

PRO

NB: FOR WIRING SEE DRAWING: N/A



Numatic International Spare Parts

Model No: TT (& HT) 1840 TANKS ASSEMBLY EXPLODED DRAWING

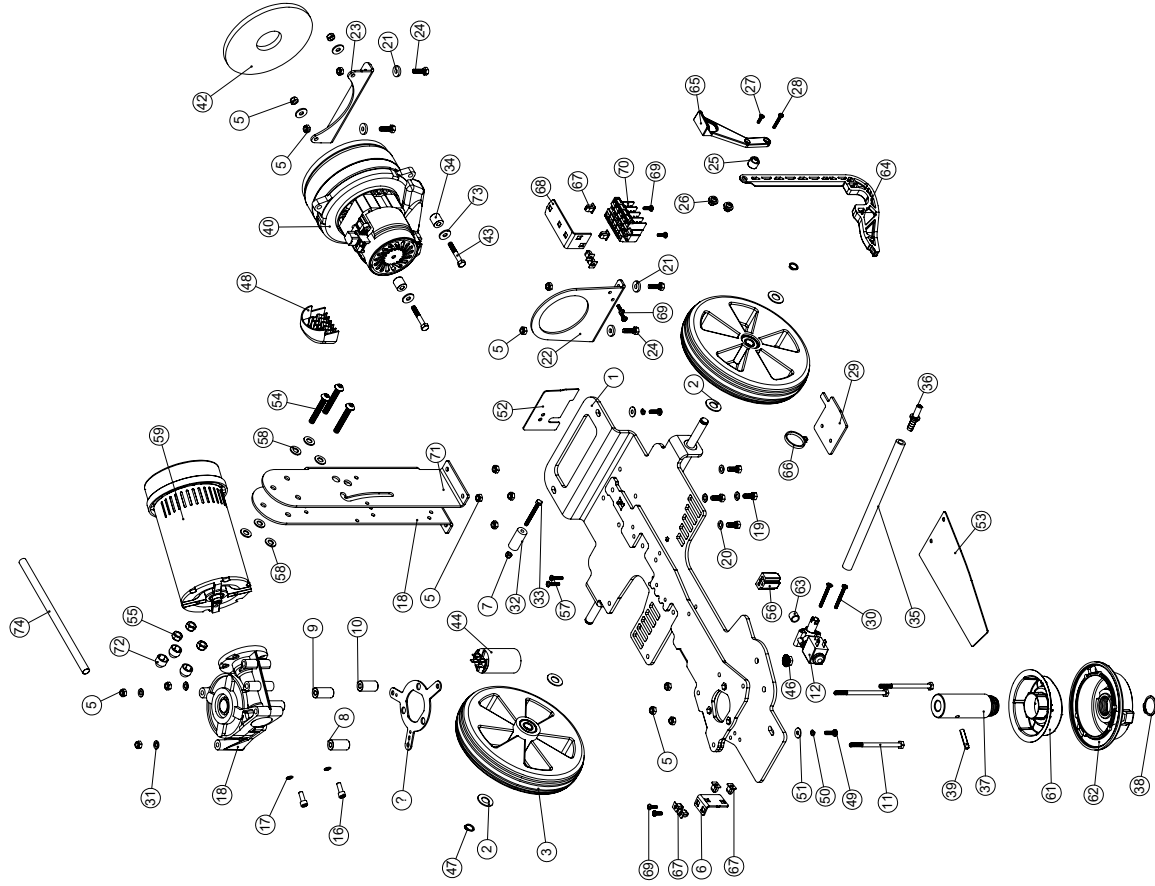
ITEM NO.	PART NO.	DESCRIPTION	COMMENTS	QTY.
1	237464	TT 1840 CLEAN TANK (MAINS)	HT VERSION 909666	1
2	903299	TT 1840 TOP TANK (GRAPHITE)	BLUE VERSION 237465 HT VERSION 909667	1
3	906415	CAP MOULDING	REPLACES 208448	1
4	392125	TTTB 1840 TAP PLATE		1
5	216260	MINI BALL VALVE		1
6	219668	M5 X 10MM LONG POZI PAN STAINLESS STEEL SCREW		1
7	902109	8MM PUSH FIT BRASS BULKHEAD FITTING		1
8	208525	BONDED SEAL		1
9	303960	TANK FILTER TUBE		1
10	303961	TANK FILTER ASSEMBLY		1
11	237233	TTTB 1840 DECK MOULDING	HT VERSION 907556	1
12	219644	M5 FORM G STAINLESS STEEL WASHER		4
13	219861	M5 SINGLE COIL STAINLESS STEEL WASHER		7
14	219740	M5 X 12MM LONG STAINLESS STEEL POZI PAN SCREW		6
16	208471	CONSTANT TENSION CLIP		1
17	237230	TTTB 1840 SEPARATOR MOULDING		1
18	237418	TTTB 1840 SEPARATOR SEAL MOULDING		1
19	237232	TTTB 1840 AIR FILTER PANEL		1
20	237411	TOP TANK FILTER		1
21	237231	TTTB 1840 SHUT OFF FLAP		1
22	903875	O RING CLIP MOULDING (RED)	BLACK VERSION 237397	2
23	291008	M5 X 10MM LONG POZI PAN COUNTERSUNK STAINLESS STEEL SCREW		2
24	303985	TTTB 1840 FILLER CAP ASSEMBLY		1
25	903544	FILLER CAP LID (RED)	GREY VERSION 237268	1
26	208715	O RING (3mm DIA 95mm)		1
27	213055	TTTB 1840 VAC HOSE C/W CUFFS		1
28	213054	SUCTION HOSE		1
29	237466	SKID PLATE MOULDING		2
30	208537	VAC HOSE CONSTANT TENSION CLIP		1
31	219355	M5 FORM A STAINLESS STEEL WASHER		2
31	220138	BLACK CABLE TIE		1
36	208466	TTTB 1840 DUMP HOSE		1
37	903325	32MM HOSE CAP RED		1
38	905467	SEALING BUNG		1
39	907179	1840 FACE MOULDING (MODEL WITH GRAPHICS)		1

Numatic International Spare Parts

Model No: TT-1840 MAINS BASE ASSEMBLY DRAWING (110-120V / 220-240V 50/60Hz)

234937
DRAWING: DRW-13250 ISSA 18
13/09/2021

FOR WIRING SEE DRAWING: DRW-13685



Numatic International Spare Parts

Model No: TT-1840 MAINS BASE ASSEMBLY DRAWING (110-120V / 220-240V 50/60Hz)

ITEM NO.	PART NO.	DESCRIPTION	QTY.
1	429137	TT1840 CHASIS (MAINS) Z/PL	1
2	208490	TTB 1840 WHEEL WASHER	4
3	914430	1840 WHEEL ASSEMBLY	2
4	429127	NUT RETAINING PLATE Z/PL	1
5	219642	M6 STAINLESS STEEL NYLON INSERT NUT	16
6	908213	SOLENOID PLATE (TT/TTB1840)	1
7	219633	M5 STAINLESS STEEL NYLON INSERT NUT	1
8	208461	30MM GEARBOX SPACER	1
9	208460	29MM GEARBOX SPACER	1
10	208459	28MM GEARBOX SPACER	1
11	291021	M6 X 90MM LONG STAINLESS STEEL HEXAGONAL HEAD BOLT	3
12	220348	SOLENOID VALVE 110V 50/60HZ	1
13	220350	SOLENOID VALVE 110V 50/60HZ (110-120V)	1
14	206754	EMD GEARBOX (GB12) (18.67:1 RATIO)	1
15	206791	EMD GEARBOX (GB12) (21:1 RATIO) (120V)	1
16	219887	M6 X 16MM STAINLESS STEEL CAP HEAD SCREW	2
17	219544	M6 SHAKEPROOF WASHER	2
18	392092	TTB 1840 HANDLE MOUNTING BRACKET	1
19	219719	M6 X 16MM LONG HEXAGONAL STAINLESS STEEL HEAD BOLT	4
20	219560	M6 FORM B STAINLESS STEEL WASHER	4
21	208472	RUBBER SPACER	4
22	429124	TTB 1840 FRONT MOTOR PLATE	1
23	429125	TTB 1840 REAR VAC MOTOR PLATE	1
24	219976	M6 X 20MM LONG HEXAGONAL HEAD SET SCREW	4
25	237241	TTB 1840 LIFT SPACER	2
26	237241	TTB 1840 SCREW END	2
27	219667	N06 X 1/2" LONG PLASTITE SCREW	1
28	219602	N06 X 1 INCH LONG POZI PAN PLASTITE SCREW (Z/PL)	1
29	392317	RAISER PLATE	1
30	219825	N08 X 1 1/2 INCH LONG POZI PAN STAINLESS STEEL PLASTITE SCREW	2
31	219870	M6 FORM A WASHER STAINLESS STEEL	3
32	208465	TTB 1840 HANDLE SPACER	1
33	219706	M5 X 45MM LONG STAINLESS STEEL HEXAGONAL BOLT	1
34	229187	15MM SPACER	2
35	303962	SOLENOID TUBE (230MM)	1
36	206796	BARBED CONNECTOR	1
37	208447	TTB 1840 DRIVE SHAFT	1
38	230048	26MM EXTERNAL CIRCLIP	1
39	219523	GROOVED PIN	1
40	606334	TT1840 VAC MOTOR SPARES KIT	1
41	606335	TT1840 VAC MOTOR SPARES KIT (120V)	1
42	208477	MOTOR PAD	1
43	21965V	M6 X 40MM LONG HEX BOLT	2
44	208285	10mF CAPACITOR DOUBLE TERMINALS M8 STUD SIZE 36x58 (4.16.10.15.64)	2
45	220887	CAPACITOR 50UF 250.83.40.40.5 (120V)	2
46	219754	M8 FLANGED NUT	2
47	219345	12MM EXTERNAL CIRCLIP	2
48	237218	TTB 1840 VAC DIFFUSER	1
49	219547	M5 X 16MM LONG POZI PAN STAINLESS STEEL SCREW	3
50	219861	M5 SINGLE COIL STAINLESS STEEL WASHER	3
51	219644	M5 FORM G STAINLESS STEEL WASHER	3
52	304461	TT1840 REAR SPLASH PLATE	1
53	304462	TT1840 MOTOR SPLASH PLATE	1
54	219922	M8 X 50MM LONG SOCKET BUTTON HEAD STAINLESS STEEL BOLT	3
55	219639	M8 STAINLESS STEEL NYLON INSERT NUT	3
56	237532	UPPER LIFT BLOCK	1
57	219568	N08 3/4 INCH LG. POZI-PAN SCREW STAINLESS STEEL PLASTITE	2
58	219070	M8 FORM A WASHER	6
59	902831	HIDRIA BRUSH MOTOR WITH FAN: 250W, 220-240V, 0707-3-8391	1
60	902830	HIDRIA BRUSH MOTOR WITH FAN: 250W, 120V, 0707-3-8381	1
61	903639	FLUID CHANNEL	1
62	904758	CHUCK (TO SUIT FLUID CHANNEL)	1
63	904769	TUBE SECTION (ST9.5E12.5R10)	1
64	903926	TTB 1840 SQUEEGEE LIFT ARM (RED)	1
65	903879	TTB 1840 SQUEEGEE LIFT HANDLE (RED)	1
66	220007	BLACK CABLE TIE	1
67	900986	NYLON GROMMET NUT (PLASTIC INSERT TO SUIT NO. 8 PLASTITE SCREW)	8
68	906626	TB LOCK SUPPORT PLATE	1
69	219569	N08 X 1/2 INCH LONG POZI PAN STAINLESS STEEL PLASTITE SCREW	6
70	906519	HYLEC 4X3 TERMINAL BLOCK ASSEMBLY (HY5084 V13F)	1
71	219471	M4 X 12MM LONG POZI PAN SEMS SCREW	1
72	903260	M8 BOLT AND NUT CAP	3
73	219008	M6 FORM G WASHER	4
74	330103	MOTOR WIRE SLEEVE (230MM CUT LENGTH)	1

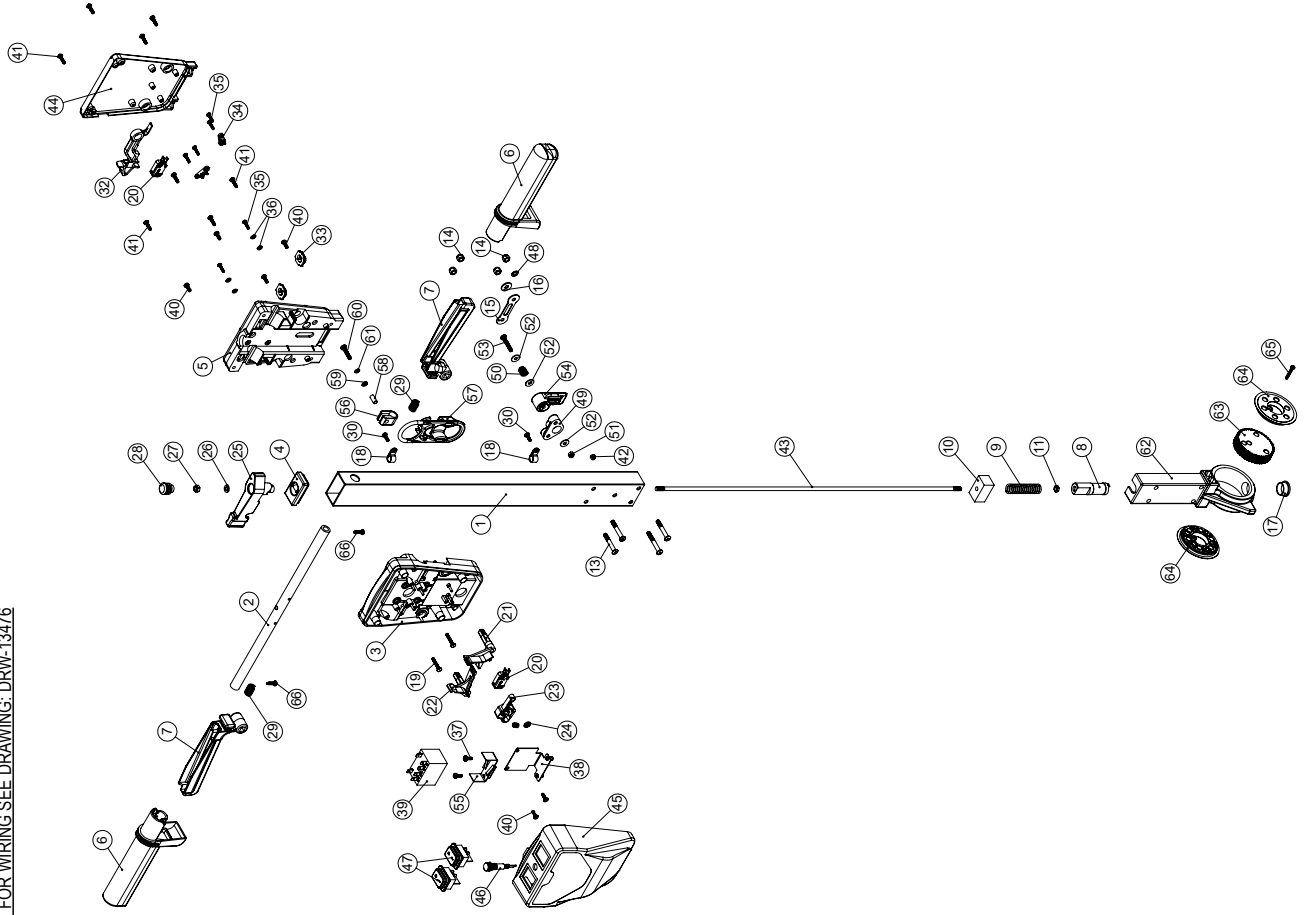
Numatic International Spare Parts

TT (& HT) 1840 (MAINS) HANDLE EXPLODED DRAWING

NB: FOR WIRING SEE DRAWING: DRW-13476

234938

DRAWING: DRW-13355 ISS:A19
01/03/2022



Numatic International Spare Parts

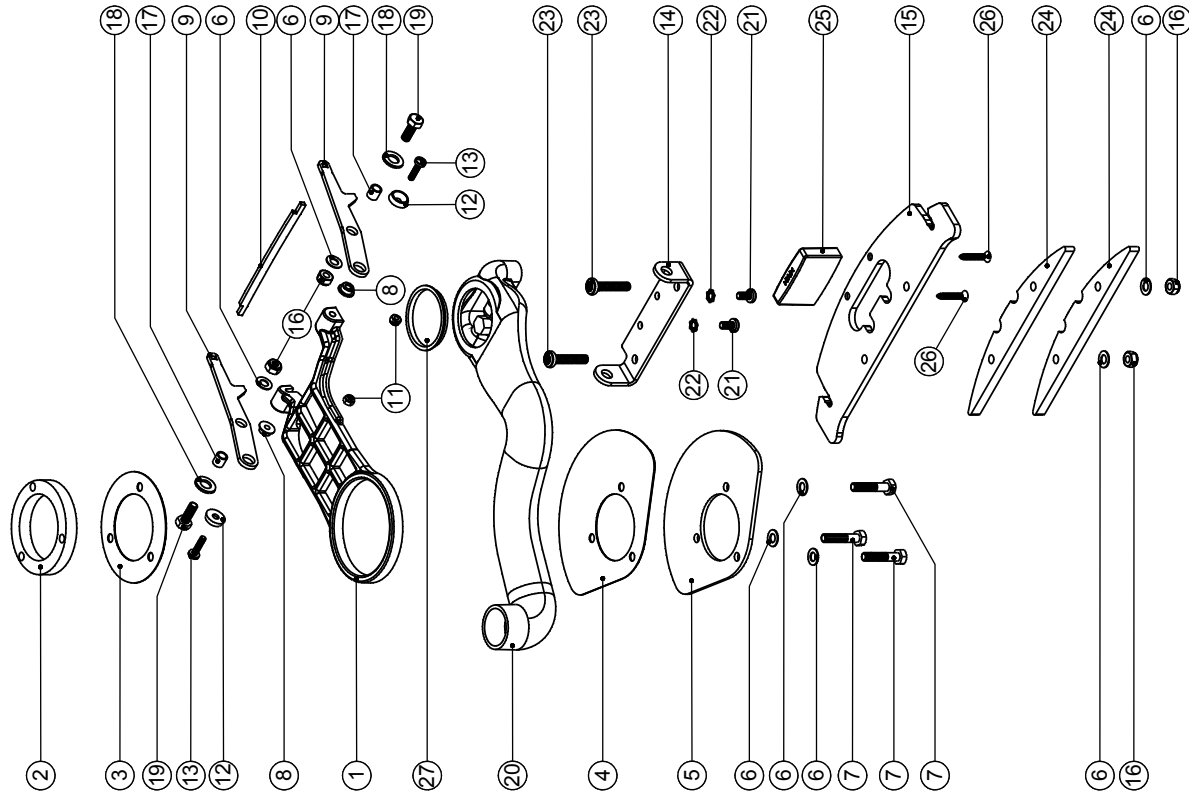
Model No: TT (& HT) 1840 (MAINS) HANDLE EXPLODED DRAWING ASSEMBLY

ITEM:	PART No:	DESCRIPTION	COMMENTS	QTY.
1	429138	TT 1840 HANDLE TUBE (MAINS) PAINTED		1
2	338269	CROSS TUBE		1
3	227576	FRONT INNER HALF MOULDING	HT 237542	1
4	903546	HANDLE PLUG MOULDING (RED)	GREY VERSION 227582	1
5	229509	REAR INNER HALF MOULDING (FR)	HT 237643	1
6	227580	HAND GRIP MOULDING	HT 237544	2
7	903547	TRIGGER MOULDING (RED)	GREY VERSION 227581	2
8	229073	GEAR LOCKING PIN		1
9	229138	SPRING		1
10	229030	ANTI VIBRATION PAD		1
11	219099	M6 HALF NUT		1
12	219881	M6 X 45MM SOCKET BUTTON HEAD SCREW		1
13	219807	M6 X 40MM LONG SOCKET BUTTON HEAD BOLT		3
14	219088	M6 NYLON INSERT NUT		4
15	229139	CABLE CLAMP		1
16	219008	M6 FORM G WASHER		1
17	229099	25MM DIA HOLE PLUG		1
18	219393	P CLIP		2
19	219811	NO8 X 1 INCH LONG POZI-PAN SELF TAP SCREW		2
20	229483	SNAP ACTION SWITCH		2
21	227585	LEFT HAND SWITCH OPERATING LEVER MOULDING		1
22	227586	RIGHT HAND SWITCH OPERATING LEVER MOULDING		1
23	227587	CENTRE SWITCH OPERATING LEVER MOULDING		1
24	219805	4MM SPIREX		1
25	903545	ADJUSTMENT LEVER MOULDING (RED)	GREY VERSION 227583	1
26	219493	M6 NYLON WASHER		1
27	219642	M6 STAINLESS STEEL NYLON INSERT NUT		1
28	20638V	19MM BLACK TUBE END STOP		1
29	219803	TRIGGER COMPRESSION SPRING		2
30	219270	NO8 X 1/2 INCH LONG POZI PAN SELF TAP SCREW		1
31	219804	SWITCH COMPRESSION SPRING		1
32	227584	INTERLOCK LEVER MOULDING		1
33	237467	BLANKING PLUG WITH HOLE		2
34	229669	LOLINE HANDLE CABLE CLAMP		2
35	219107	NO6 5/8 INCH L.G POZI-PAN SCREW Z/PL PLASTITE		6
36	219206	M4 FORM A WASHER		4
37	219471	M4 X 12MM LONG POZI PAN SEMS SCREW		3
38	303526	NUTSERTED RELAY MOUNTING BRACKET		1
39	206575	240V / 25A RELAY		1
40	219101	NO8 X 1/2 INCH LONG POZI PAN PLASTITITE SCREW		6
41	219105	NO8 X 5/8 INCH LONG POZI PAN PLASTITITE SCREW		8
42	229009	BLANKING PLUG		1
43	215029	610MM HANDLE LOCKING ROD		1
44	227579	REAR COVER MOULDING	HT 905663	1
45	229748	FRONT COVER MOULDING (MAINS & BATTERY)	HT 907547	1
46	220812	230V NEON INDICATOR & RED LENS		1
47	904045	SWITCH DPST RED MEMBRANE		2
48	219007	M6 FORM B WASHER		1
49	903882	CABLE RELEASE BASE MOULDING RED	GREY VERSION 227806	1
50	206599	SPRING (REF:C6514370)		1
51	219076	M5 NYLON INSERT NUT		1
52	219644	M5 FORM G STAINLESS STEEL WASHER		3
53	219720	M5 X 30MM LONG STAINLESS STEEL POZI PAN SCREW		1
54	903883	CABLE RELEASE TOP MOULDING RED	GREY VERSION 227807	1
55	206500	RELAY BRACKET		1
56	219743	CABLE CLEAT		1
57	902312	CABLE STRESS RELIEF		1
58	903192	SPIROL SPACER SP100 5MM NOM ID x 14MM		1
59	219355	M5 FORM A STAINLESS STEEL WASHER		1
60	219575	M5 X 25MM LONG POZI PAN STAINLESS STEEL SCREW		1
61	219016	M5 SHAKEPROOF WASHER		1
62	900398	HANDLE CASTING MACHINED (HNS VERSION)		1
63	900397	MINI ADJUSTMENT GEAR		1
64	900396	ADJUSTMENT GEAR SPACER		2
65	291150	NO8 X 1 INCH LONG POZI PAN SCREW S/S		1
66	219036	NO8 X 5/8 INCH LONG POZI PAN SELF TAPPING SCREW		2

Numatic International Spare Parts

Model No: SWING ARM ASSEMBLY EXPLODED DRAWING

234839.330042
DRAWING: DRW-10739 ISS:A09
05/07/2019



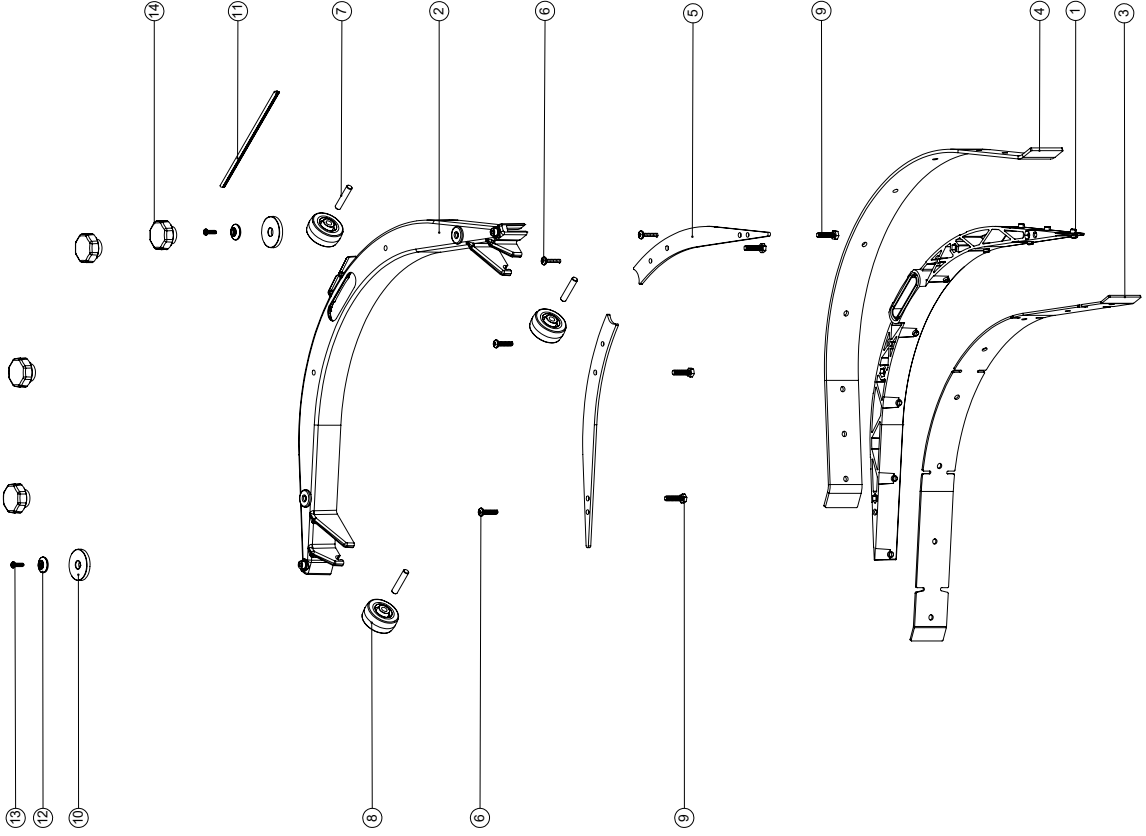
Numatic International Spare Parts

Model No: SWING ARM ASSEMBLY EXPLODED DRAWING

ITEM NO.	PART No.	DESCRIPTION	QTY.
1	429133	TTB 1840 SWING ARM PAINTED	1
2	208449	TTB 1840 SWING ARM CENTRE PIVOT	1
3	208491	TTB 1840 NYLON DISC	1
4	208482	TTB 1840 SWING ARM NYLON PLATE	1
5	429126	TTB 1840 SWING ARM BOTTOM PLATE	1
6	219560	M6 FORM B STAINLESS STEEL WASHER	7
7	291022	M6 X 30MM LONG STAINLESS STEEL HEXAGONAL HEAD BOLT	3
8	237265	PIVOT BUSH	2
9	392120	TT/TTTB 1840 SQUEEGEE PIVOT ARM	2
10	392124	TTB 1840 SQUEEGEE LIFT PLATE	1
11	219687	M4 STAINLESS STEEL NYLON INSERT NUT	2
12	219573	SCREW INSULATOR	2
13	219862	M4 X 16MM LONG POZI PAN STAINLESS STEEL SCREW	2
14	392119	PIPE CONNECTING BRACKET	1
15	429129	TTB 1840 SQUEEGEE SKID PLATE	1
16	219642	M6 STAINLESS STEEL NYLON INSERT NUT	4
17	208475	8MM SPACER	2
18	219578	M8 FORM A STAINLESS STEEL WASHER	2
19	219719	M6 X 16MM LONG HEXAGONAL STAINLESS STEEL HEAD BOLT	2
20	903535	FLUID PIPE PROCESSED (GRAPHITE) (SALES USE 902531)	1
21	219668	M5 X 10MM LONG POZI PAN STAINLESS STEEL SCREW	2
22	291020	M5 STAINLESS STEEL EXTERNAL SHAKEPROOF LOCK WASHER	2
23	219984	M6 X 30MM LG POZI-PAN STAINLESS STEEL MACHINE SCREW	2
24	429131	TTB 1840 ADDITIONAL WEIGHT	2
25	237531	LOWER LIFT BLOCK	1
26	291086	No.8 X 1 A2 S/ST PZ COUNTER SUNK. SELF TAP TYPE AB	2
27	901880	PROTECTION PLUG DIA 43MM	1

577761
DRAWING: DRW-7011 ISS:A16
27/11/2019

Numatic International Spare Parts
Model No: TTB 1840 SQUEEGEE EXPLODED DRAWING ASSEMBLY



Numatic International Spare Parts
Model No: TTB 1840 SQUEEGEE EXPLODED DRAWING ASSEMBLY

POS.	ITEM NO.	DESCRIPTION	QTY.
1	237235	TTB 1840 SQUEEGEE INNER MOULDING	1
2	237236	TTB 1840 SQUEEGEE OUTER MOULDING	1
3	903288	TTB 1840 SQUEEGEE FRONT BLADE	1
4	903291	TTB 1840 SQUEEGEE REAR BLADE	1
5	429130	TTB 1840 SQUEEGEE SIDE PLATE Z/PL	2
6	219568	NO8.3/4 INCH LG.POZI-PAN.SCREW.STAINLESS STEEL.PLASTITE	4
7	208610	TTB 1840 SQUEEGEE AXLE	3
8	208454	TTB 1840 SQUEEGEE WHEEL	3
9	291029	M5.20MM LG.HEX.SCREW S/S	4
10	237266	BUFFER WHEEL	2
11	N/A	SQUEEGEE SEAL EXTRUSION	1
12	208603	NYLON FINISHING WASHER (BLACK)	2
13	291053	3.5 X 12MM POZI PAN PLASTITE SCREW S/S	2
14	208455	TTB 1840 SQUEEGEE KNOB	4

Numatic International Limited (Head Office)

Chard, Somerset TA20 2GB, UNITED KINGDOM

Tel: 01460 68600 numatic.com

Numatic International GmbH

Fränkische Straße 15-19, 30455 Hannover, DEUTSCHLAND

Tel: +49 (0) 511 984 2160 numatic.de

Numatic International Denmark

Fränkische Straße 15-19, 30455 Hannover, DEUTSCHLAND

Tel: +45 (0) 316 40808 numatic-online.dk

Numatic International S.A.S

13/17 rue du Valengelier, EAE la Tuilerie, 77500 Chelles, FRANCE

Tel: +33 (0) 164 726 161 numatic.fr

Numatic International BV

Vennootsweg 15, 2404 CG, Alphen aan den Rijn, NEDERLAND

Tel: +31 (0) 172 467 999 numatic.nl

Numatic International Schweiz AG.

Sihlbruggstrasse 3A, 6340 Baar, SCHWEIZ

Tel: +41 (0) 41 768 0760 numatic.ch

Numatic International (PTY) Ltd.

Cnr. 16th & Pharmaceutical Road, Randjes Park, Midrand 1685, SOUTH AFRICA

Tel: +27 (0) 861 686 284 numatic.co.za

Numatic International ULDA

Rua Francisco da Silva Duarte, nº79,

4475-269 Santa Maria de Avioso, Castelo da Maia, PORTUGAL

Tel: +351 220 047 700 numatic.pt

Numatic International Spain, S.L.U.

Av. Baix Llobregat, 5-7, Oficina bajos 1 (Parc Negocis Mas Blau II)

08820 El Prat de Llobregat (Barcelona), SPAIN

Tel: +34 93 647 22 22 numatic.es

Numatic International Italy S.R.L

Via Luigi Galvani, 2, Z.I. Talponedo, 33080 Porcia (PN), ITALY

Tel: +39 (0) 434 046 211 numatic.it