



# FLF-H

Remote indication lamp

FLF-MP

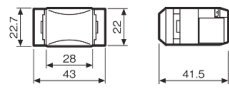


FLF-HP

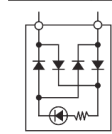


## Dimension (mm)

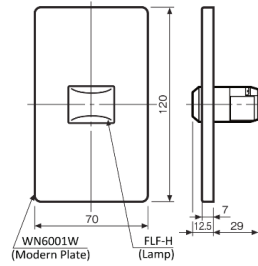
Remote Indication Lamp (FLF-H)



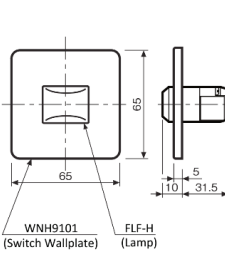
Internal Circuit (FLF-H)



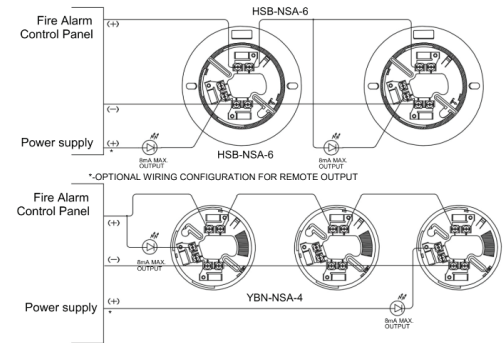
FLF-MP



FLF-HP



## Diagram



## Specification

Type	Remote Indication Lamp
Model	FLF-H, FLF-MP, FLF-HP
Operating Voltage	8mA @24Vdc
Operating Temp. Range	-10°C to 40°C
External Wire Resistance	50 Ω or less
Material Body Lamp Plate (FLF-MP)  Plate (FLF-HP)	Self-Extinguishing Resin Self-Extinguishing Resin ABS Resin (WN6001W) Metal Fitting (WN3700020) ABS Resin (WNH9101) Metal Fitting (WNH3901)
Color Body Lamp Plate	White Ivory Milky White Opal Milky White
Weight FLF-H FLF-MP FLF-HP	Approx. 26g Approx. 75g Approx. 55g
Country of Origin	Japan
Compatible Detector Base	YBN-NSA-4, HSB-NSA-6, YBO-R/1NAH

\* FLF-MP, FLF-HP are set items. (Main body + Plate + Metal fitting)

FLF-MP    Lamp                    FLF-H  
              Plate                    WN6001W (ABS Resin)  
              Metal Fitting            WN3700020

FLF-HP:    Lamp                    FLF-H  
              Plate                    WNH9101 (ABS Resin)  
              Metal Fitting            WNH3901

\* Compatible plate to use with FLF-H is available at electrical market.

HOCHIKI ASIA PACIFIC PTE. LTD.

82 UBI Ave 4 #06-02  
Edward Boustead Centre, Singapore 408832  
TEL: 65-6841-9728 | FAX: 65-6841-9781  
URL : www.hochikiasiapacific.com

HEAD OFFICE

10-43 Kamiosaki 2-Chome.  
Shinagawa-Ku, Tokyo 141-8660 Japan  
TEL: 81-(3)-3444-4116 | FAX: 81-(3)-3444-4167  
URL :www.hochiki.co.jp