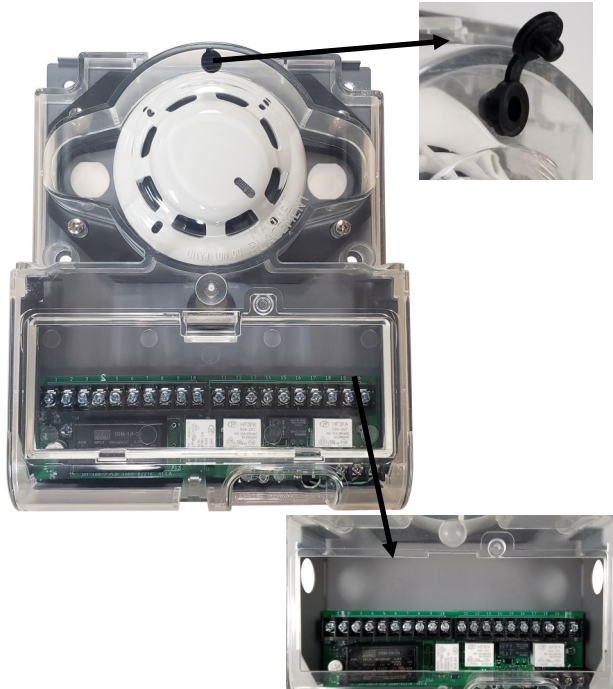


DH-100-P - Conventional Duct Smoke Detector

Smoke port for testing without cover removal



Wiring Access hatch for wiring maintenance without cover removal

STANDARD FEATURES

- New Rugged Durable Housing
- Easy Smoke Testing Port
- Removable Terminal Cover
- Durable Steel Base, Silicone Gaskets, Polycarbonate Housing
- Multi-Voltage Compatibility
- Installs quickly and easily
- No screens or filters to clean
- UL 268A Listed

PRODUCT DESCRIPTION

The DH-100-P is designed and built to meet all local requirements, as well as the NFPA regulations regarding duct smoke detectors. The DH-100-P is provided with a local test button, and output terminals for remote status indicators and test switches. Air sampling is accomplished by two tubes which protrude into the duct. The 7.5" exhaust tube is supplied with the duct smoke detector unit. Once the duct width has been determined the air intake sampling tubes must be ordered. Sampling tubes are supplied in three standard lengths 2.5ft., 5 ft. and 10ft. and cut to size to fit the duct.

ELECTRICAL INSTALLATION

Wiring must conform to applicable local codes, ordinances and regulations covering these types of devices. Wire the detectors according to the engineering drawings for the particular job requirements. These detectors are not intended for open area protection, nor should they be used for open air protection. Refer to NFPA 90A and NFPA 72 for general and additional information on Duct Smoke Detectors concerning operation and installation. Terminals are suitable for up to #14 gauge wire.

Specifications subject to change without notice.

APPLICATION

The HOCHIKI AMERICA DH-100-P 4-wire duct smoke detector provides early detection of smoke and products of combustion present in air moving through HVAC ducts in Commercial, Industrial and Residential applications. The DH-100-P is designed to prevent the recirculation of smoke in areas by the air handling systems, fans and blowers. Complete systems may be shut down in the event of smoke detection. The HOCHIKI AMERICA DH-100-P operates on 120VAC, 240VAC, 24VAC, or 24VDC and has no compatibility restrictions.

PRODUCT LISTINGS

SIGNALING



LISTED
S1383



California
State Fire
Marshal

PENDING

SPECIFICATIONS

Duct Detector Model #	DH-100-P
Detector Head Model	SOC-24DH
Input Voltage / Current (includes SOC-24DH, and Remote Accessories)	Alarm 24VDC 78mA 24VAC 370mA 115AC 48mA 230VAC 31mA Normal Standby 24VDC 20mA 24VAC 263mA 115AC 15mA 230VAC 10mA
Operating Temperature Range	Inside Duct 0°C (32°F) ~ 38°C (100°F) Housing Ambient 0°C (32°F) ~ 49°C (120°F)
Detector Head Type	Conventional Photoelectric
Standby Current	20mA @ 24VDC
Alarm Current	78mA @ 24VDC
Alarm Contacts	2 form C rated 10A @ 115/230 VAC 7A @ 28VDC
Test Method	Test Switch or Smoke Port or Magnet
Air Velocity	1000 to 4000 ft/min.
Sensitivity	1.36-2.33%/FT @ 4000FPM
Visual Indicator (Status LED)	PILOT: Green - Normal Off - Shutoff/Detector Missing ALARM: Off - Normal Yellow - Check Voltage / Detector Head Red - Alarm
Storage Temperature Range	-30°C (-22°F) ~ 70°C (158°F)
Ambient Temperature	0°C (32°F) to 38°C (100°F)
Humidity	10% to 93% Relative Humidity (non-condensing)
Maximum Relative Humidity	93% Relative Humidity (non-condensing)
Environment	Indoor dry use only, Mount to Duct Side or Top
Housing Material	18 G.A. steel backbox, clear plastic cover
Finish	Grey Paint
Dimensions	7.5"W x 9.5"H x 2.5"D
Weight	Approximately 3.0lb
Sampling Tubes	2.5ft., 5ft. or 10ft.

Specifications subject to change without notice.

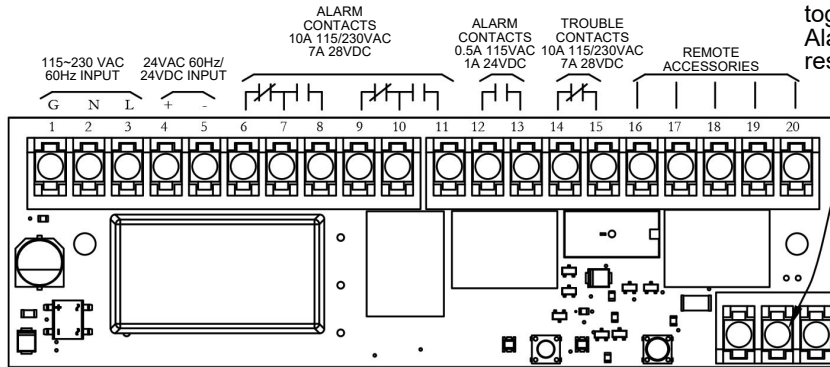
Hochiki America Corporation
7051 Village Drive, Suite 100, Buena Park, CA 90621-2268
Phone: 714-522-2246 Fax: 714-522-2268
Technical Support: 800-845-6692 or technicalsupport@hochiki.com



Find latest revision at www.hochiki.com

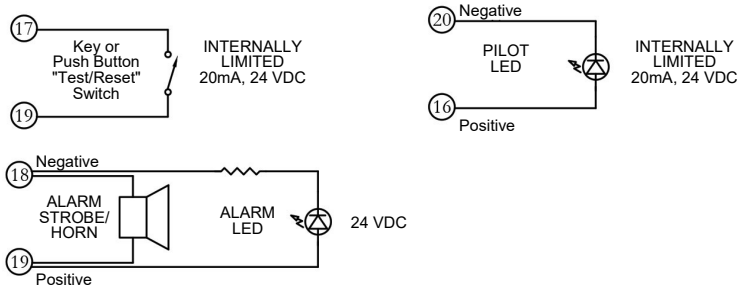
WIRING DIAGRAMS

All contacts are shown in normal supervisory condition. Alarm contacts will toggle during alarm or test switch activation. Trouble contacts will toggle to trouble condition if detector is removed. Alarm contacts must be reset by pressing the reset switch after activation.



FACTORY WIRED TERMINALS. DO NOT ADJUST.

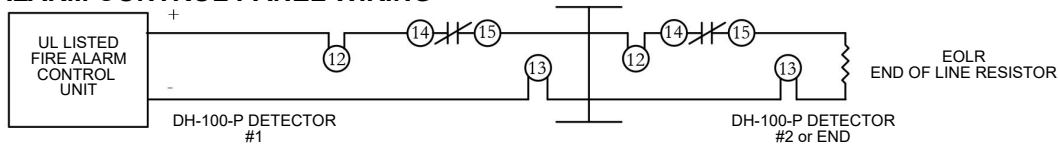
REMOTE ACCESSORY WIRING



COMPATIBLE REMOTE ACCESSORIES

Model Number	Product Description
MS-RA	Remote Alarm LED
MS-RA/P	Remote Alarm LED & Pilot LED
MS-RA/R	Remote Alarm LED & Push Button Test/Reset Switch
MS-RA/P/R	Remote Alarm LED, Pilot LED, & Push Button Test/Reset Switch
MS-KA/R	Remote Alarm LED & Key-Operated Test/Reset Switch
MS-KA/P/R	Remote Alarm LED, Pilot LED, & Key-Operated Test/Reset Switch

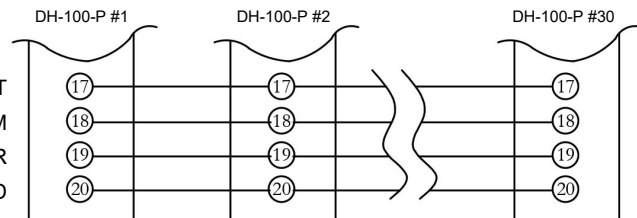
FIRE ALARM CONTROL PANEL WIRING



COMMON FUNCTION WIRING

Up to 30 units may be interconnected for all alarm relays to operate with a single alarm. Terminals 17 and 19 are optional

REMOTE COMMON TEST/RESET
 REMOTE COMMON ALARM
 REMOTE COMMON AUX POWER
 COMMON AUX GROUND



* Individual Remote Pilot LED's must be installed to monitor detector head or power source removal for each unit.